

Z-stacked confocal micrograph of a whole-mount cornea from a TRPV1-GFP mouse. The image shows one of the points where sub-epithelial nerves traverse the basal lamina and divide into thinner sub-basal nerves (leashes) running in parallel for long distances beneath the basal epithelium cells. Coimmunostaining of Piezo2 and TRPV1 is observed at the penetration point. Nerves were immunolabeled with anti- β -III tubulin (red), anti-GFP (green) and anti-Piezo2 (white) antibodies. Nuclei of epithelial cells are stained with Hoechst 33342 (in blue).

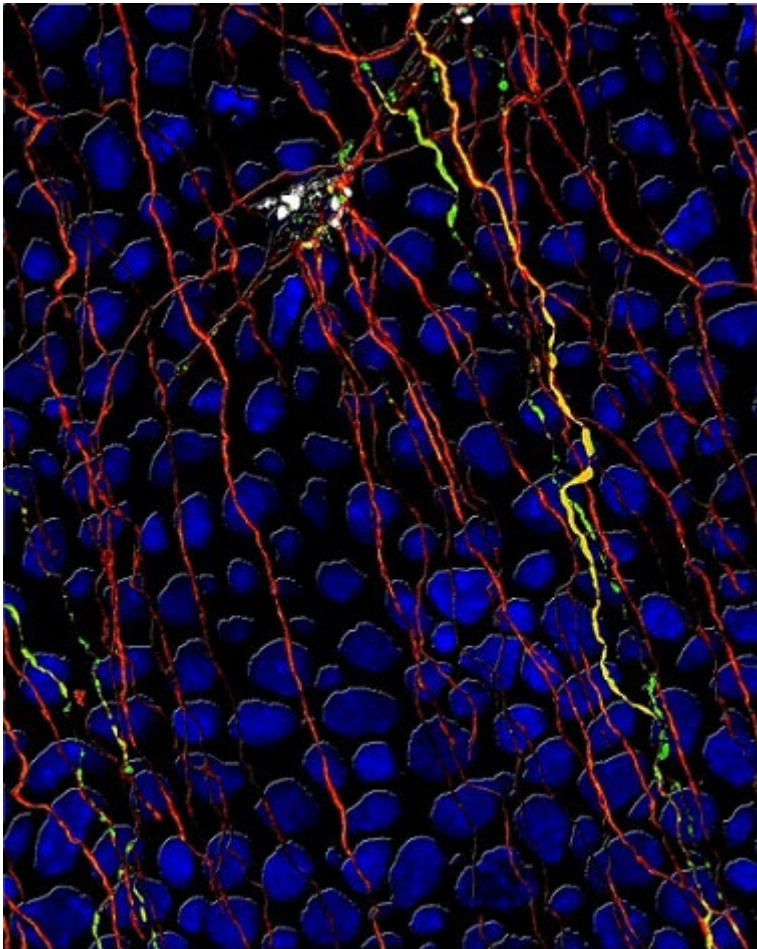


Image: Almudena Iñigo-Portugués.